

# METAMORPHIC

R

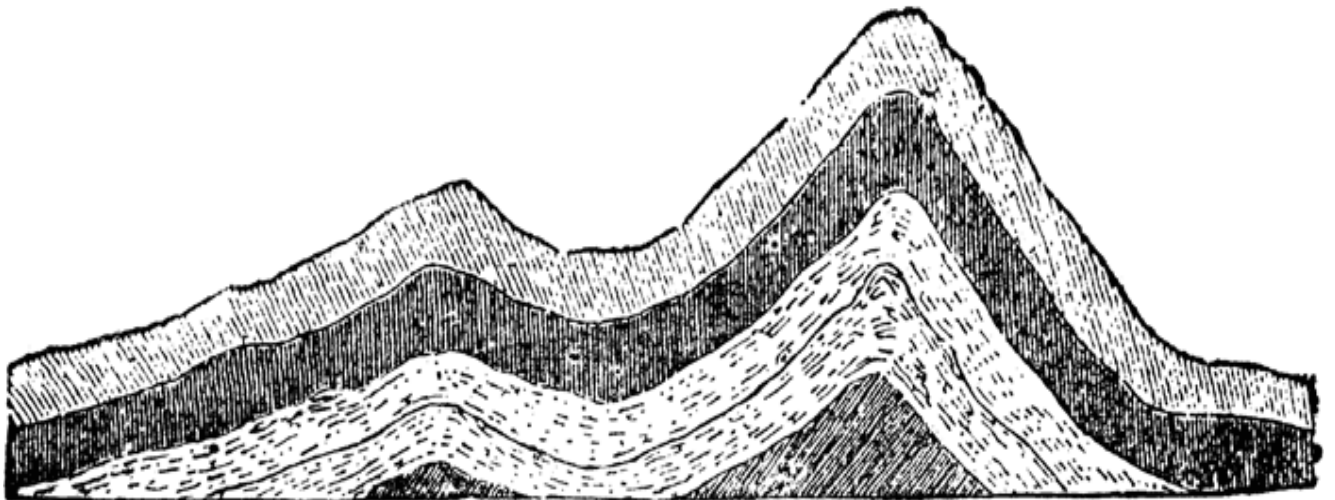
U

C

K

S

Handwriting practice lines consisting of five sets of horizontal lines. Each set includes a solid blue top line, a dashed red middle line, and a solid blue bottom line.



R

O

C

K

S

METAMORPHIC

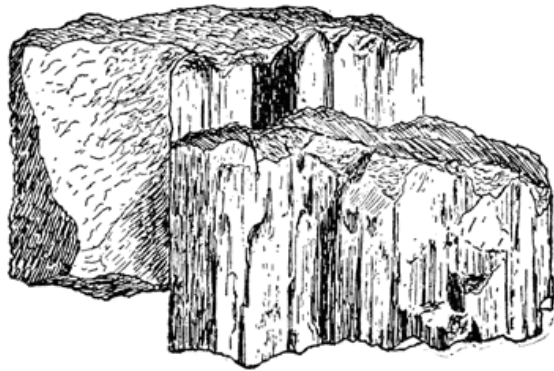


# Metamorphic



Handwriting practice lines consisting of solid blue top and bottom lines and a dashed red middle line. There are ten such sets of lines on the page.

# METAMORPHIC



# ROCKS

Handwriting practice lines consisting of solid blue top and bottom lines and a dashed red middle line. There are five sets of these lines on the page.

# METAMORPHIC

R  
O  
C  
K  
S

Handwriting practice lines consisting of five sets of horizontal lines. Each set includes a solid top blue line, a dashed middle red line, and a solid bottom blue line.



R

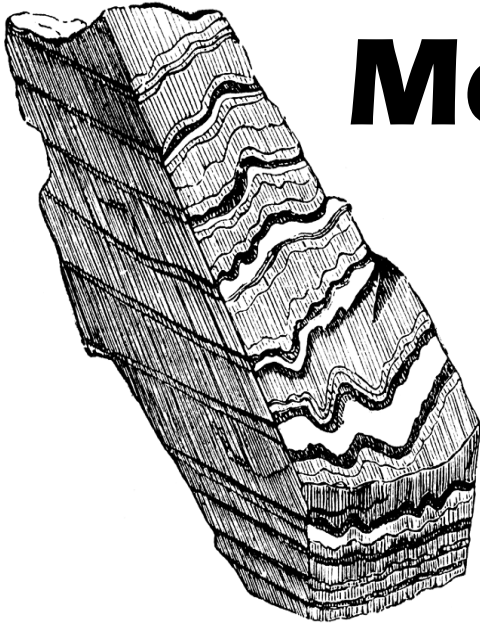
O

C

K

S

METAMORPHIC



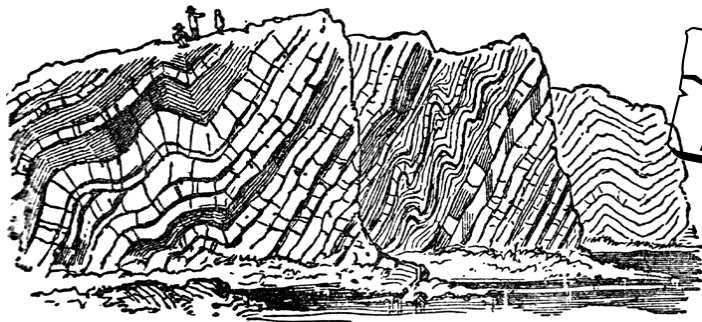
# Metamorphic

# ROCKS

Handwriting practice lines consisting of multiple sets of three horizontal lines: a solid blue top line, a dashed red middle line, and a solid blue bottom line.



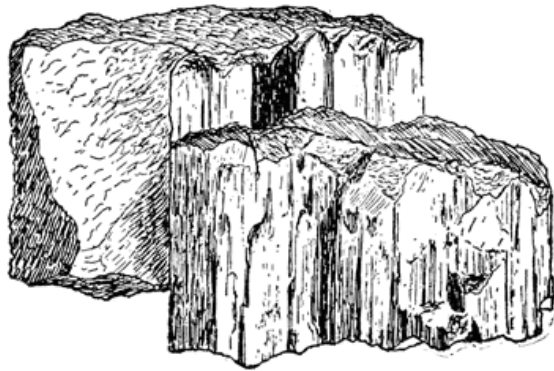
# Metamorphic



ROCKS

Handwriting practice lines consisting of solid blue top and bottom lines and a dashed red middle line, repeated multiple times for writing practice.

# METAMORPHIC



# ROCKS

Handwriting practice lines consisting of multiple sets of three horizontal lines: a solid blue top line, a dashed red middle line, and a solid blue bottom line.

# METAMORPHIC

R  
U  
C  
K  
S

---

---

---

---

---

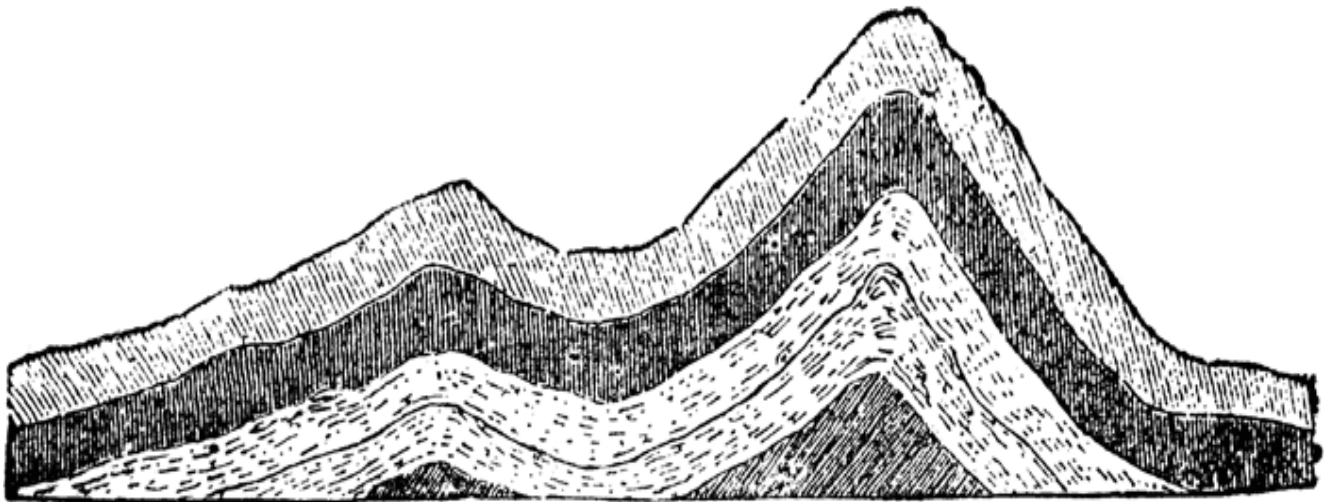
---

---

---

---

---



R

O

C

K

S

---

---

---

---

---

---

---

---

---

---

---

**METAMORPHIC**





