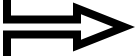
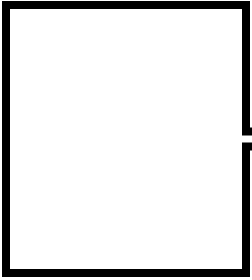


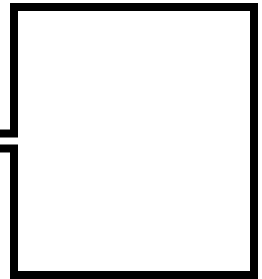
SIT vs. SET



Handwriting practice lines consisting of a solid blue top line, a dashed red middle line, and a solid blue bottom line.

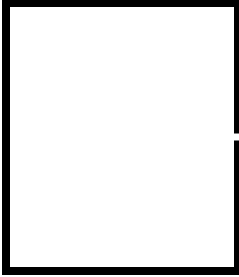
Two sets of handwriting practice lines, each consisting of a solid blue top line, a dashed red middle line, and a solid blue bottom line.

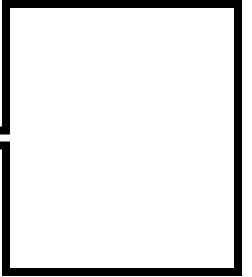
Handwriting practice lines consisting of a solid blue top line, a dashed red middle line, and a solid blue bottom line.



Two sets of handwriting practice lines, each consisting of a solid blue top line, a dashed red middle line, and a solid blue bottom line.

SIT vs. SET



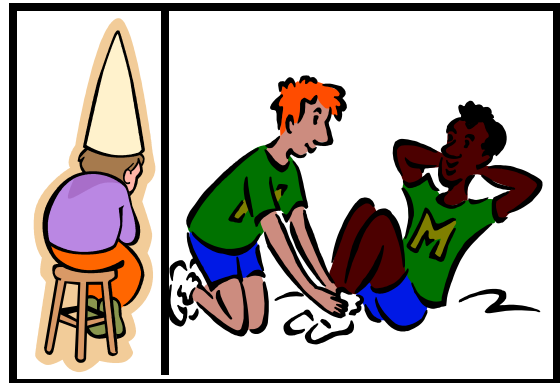


SIT OR SET

SIT

MEANING

To rest, to be located



INTRANSITIVE VERB —no object

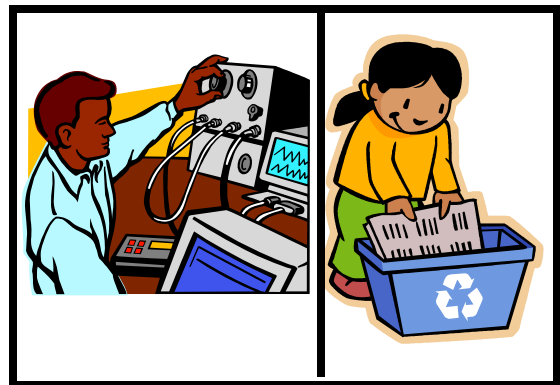
FORMS

infinitive	present	past	past participle	present participle
to sit	sit(s)	sat	has/have sat	sitting

SET

MEANING

To put or place



TRANSITIVE VERB —has an object

FORMS

infinitive	present	past	past participle	present participle
to set	set	set	has/have set	setting

SIT OR SET

SIT

MEANING

FORMS

infinitive	present	past	past participle	present participle

SET

MEANING

FORMS

infinitive	present	past	past participle	present participle