

CHEMISTRY

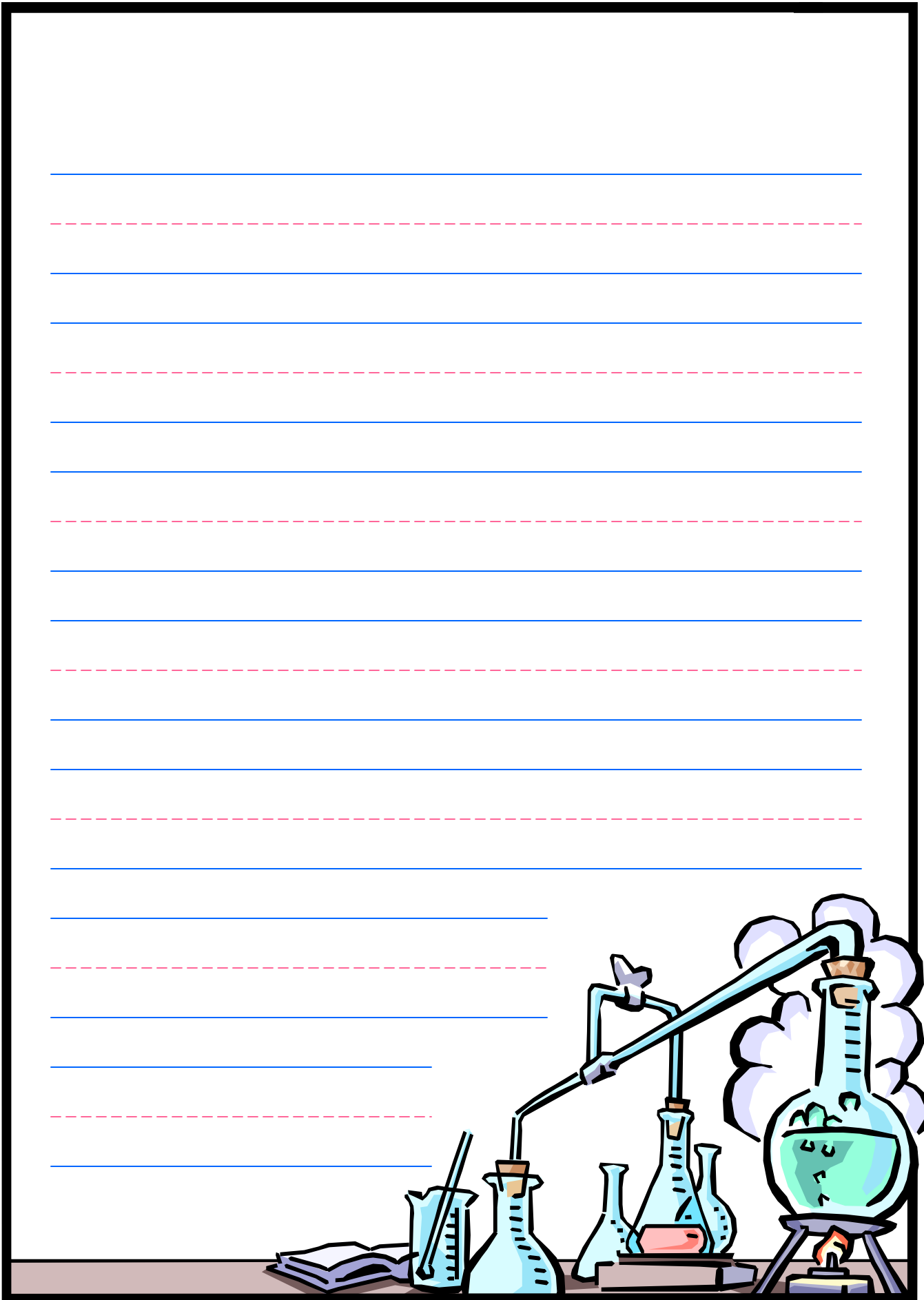
Handwriting practice area consisting of 10 sets of horizontal lines. Each set includes a solid blue top line, a dashed red middle line, and a solid blue bottom line.



SCIENCE

Handwriting practice area with 10 sets of lines. Each set consists of a solid blue top line, a dashed red middle line, and a solid blue bottom line.





CHEMISTRY

Handwriting practice area consisting of 10 sets of horizontal lines. Each set includes a solid blue top line, a dashed red middle line, and a solid blue bottom line.



SCIENCE

Handwriting practice area consisting of 10 sets of horizontal lines. Each set includes a solid blue top line, a dashed red middle line, and a solid blue bottom line.

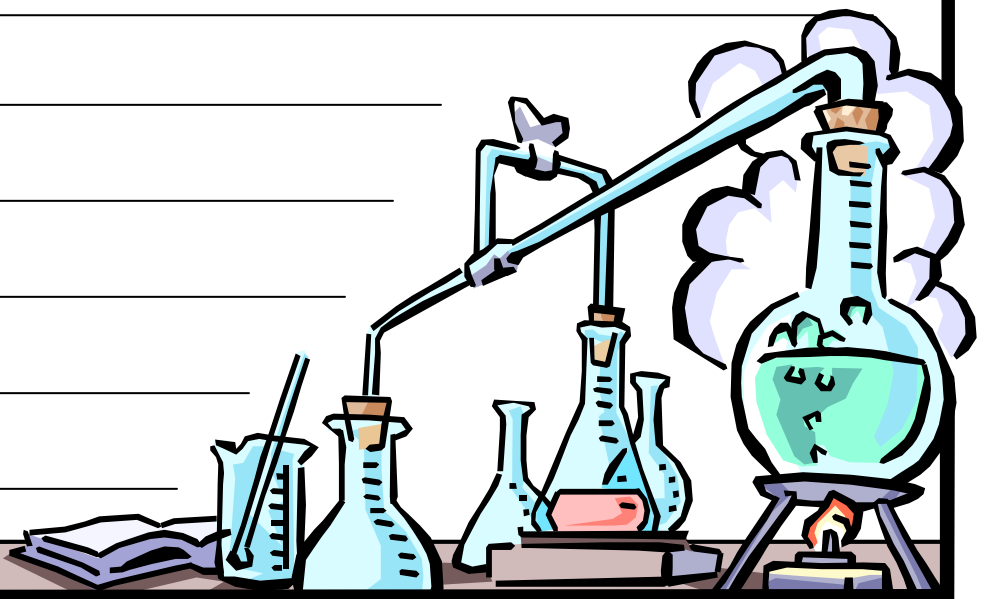




CHEMISTRY



SCIENCE



Blank lined area for writing notes.

