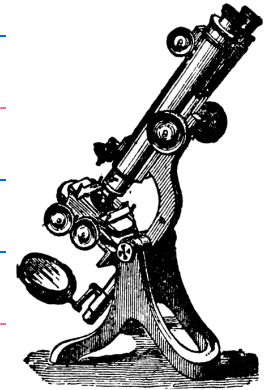
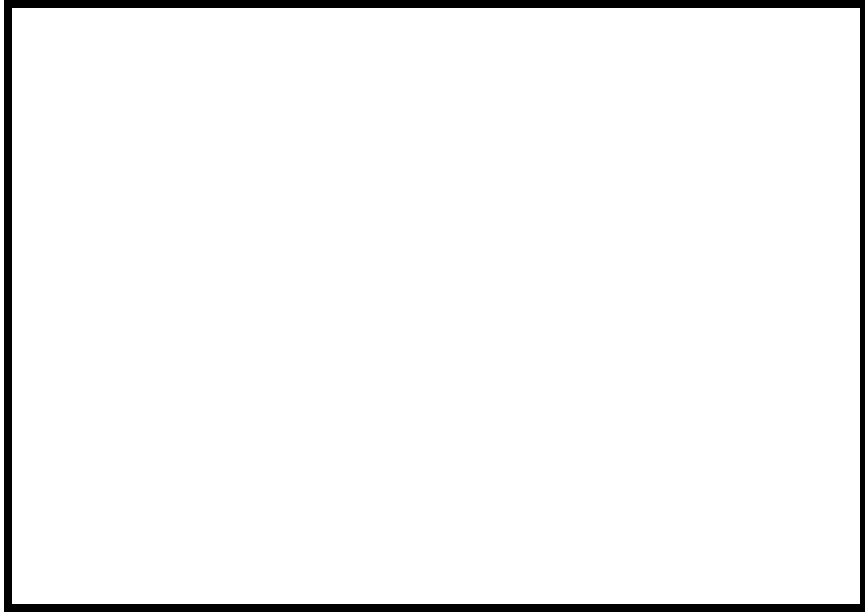


Paramecium

A series of ten horizontal writing lines for student notes. Each line set consists of a solid blue top line, a dashed red middle line, and a solid blue bottom line.

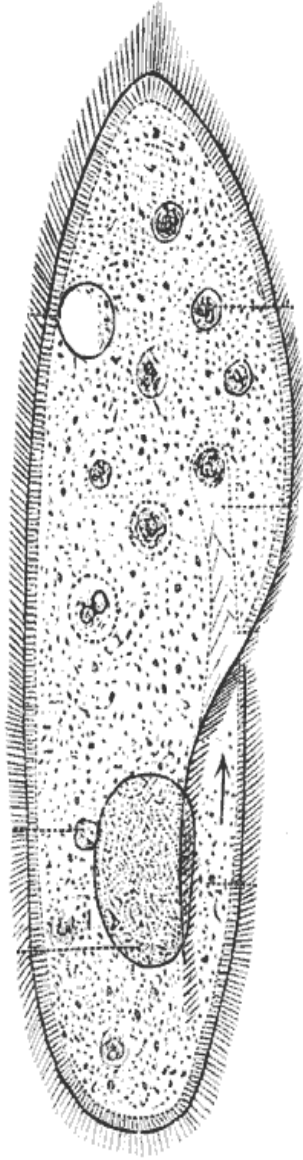


Handwriting practice lines consisting of four sets of blue top and bottom lines with a red dashed midline.



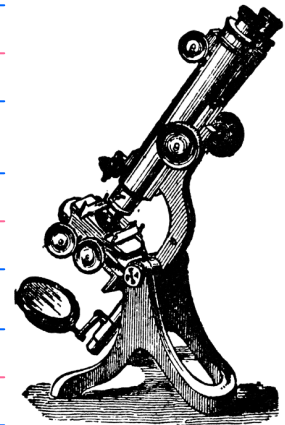
Handwriting practice lines consisting of four sets of blue top and bottom lines with a red dashed midline.

PARAMECIUM



Paramecium

Handwriting practice area consisting of ten sets of horizontal lines. Each set includes a solid blue top line, a dashed red middle line, and a solid blue bottom line.



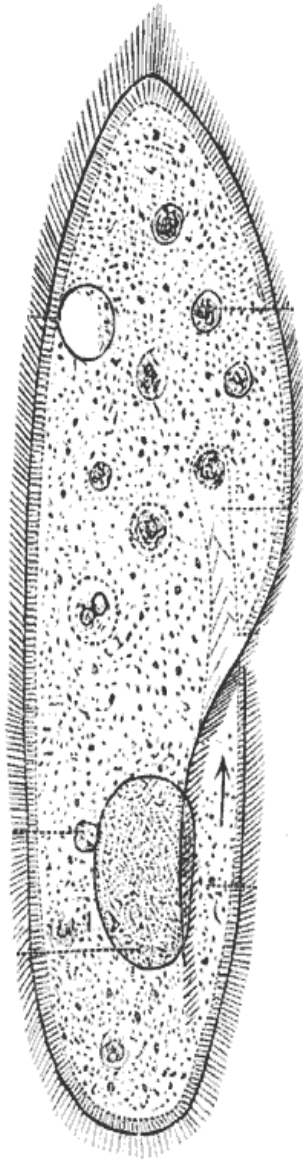
Handwriting practice lines consisting of four sets of three horizontal lines each. Each set includes a solid blue top line, a dashed pink middle line, and a solid blue bottom line.

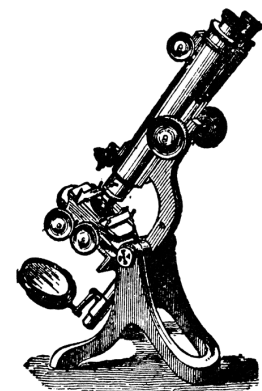


Handwriting practice lines consisting of one set of three horizontal lines: a solid blue top line, a dashed pink middle line, and a solid blue bottom line.

PARAMECIUM

Paramecium







PARAMECIUM