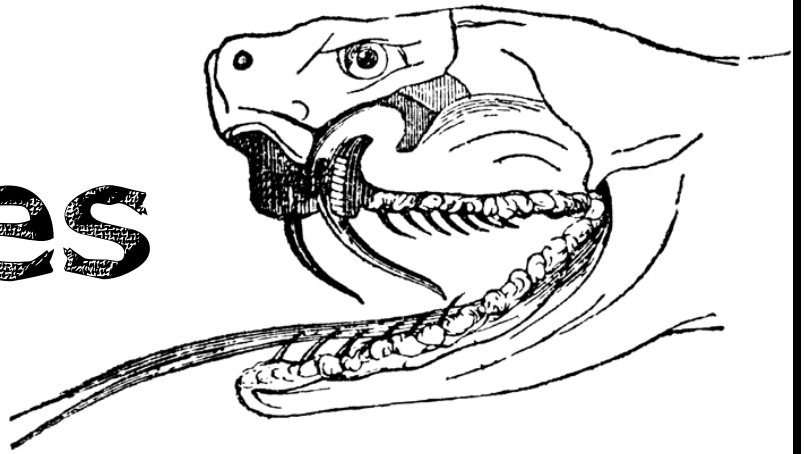


Snakes

Handwriting practice lines consisting of solid blue top and bottom lines and a dashed red middle line. There are four sets of these lines, each starting from the right side of the page and extending to the left edge.

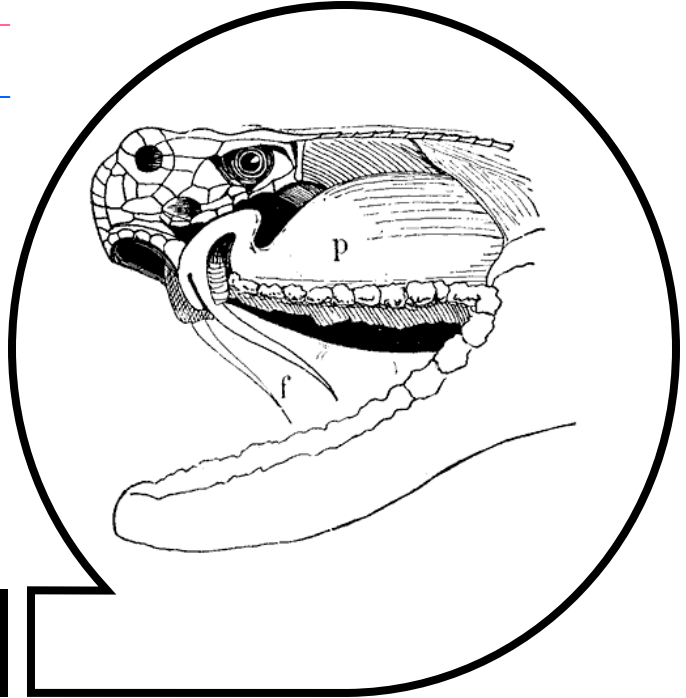
Snakes



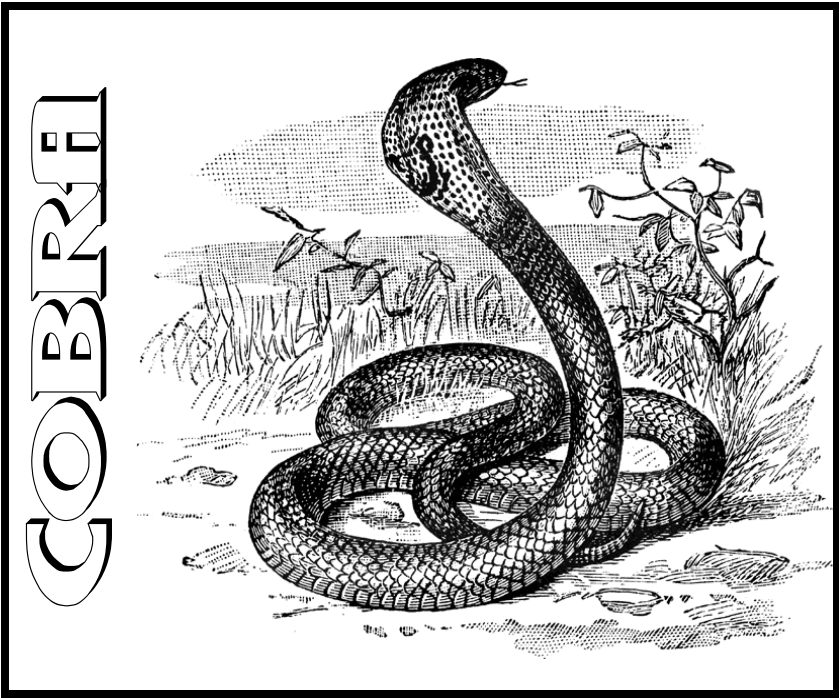
Handwriting practice lines consisting of solid blue top and bottom lines and a dashed red middle line. There are ten such sets of lines arranged vertically down the page.

RATTLESNAKE

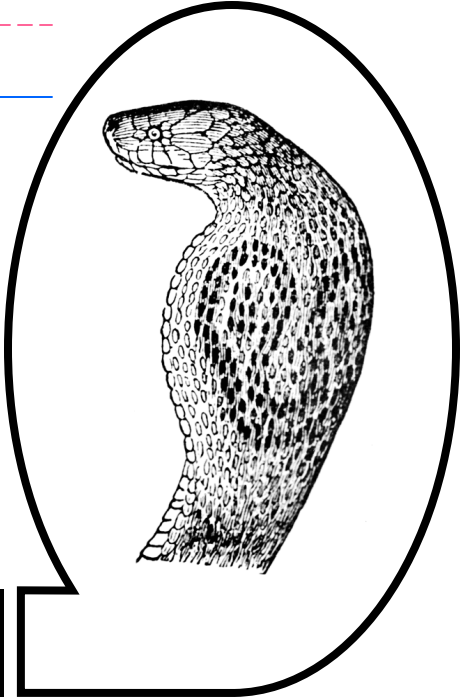
Handwriting practice lines consisting of multiple sets of blue top and bottom lines with a red dashed midline.



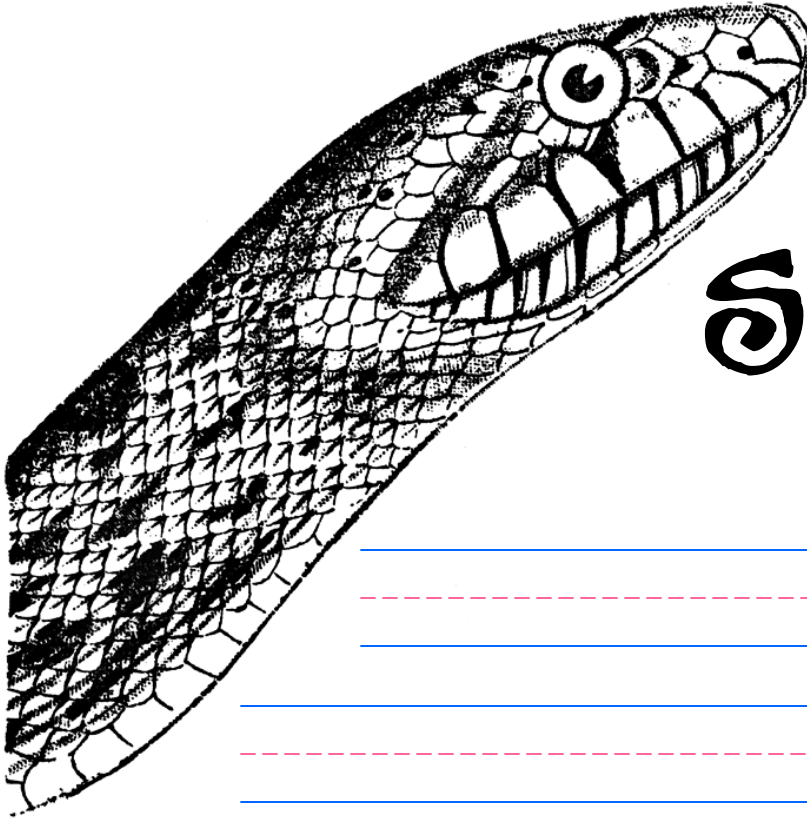
A rectangular box for drawing or additional notes.



Handwriting practice lines consisting of multiple sets of blue top and bottom lines with a red dashed middle line.



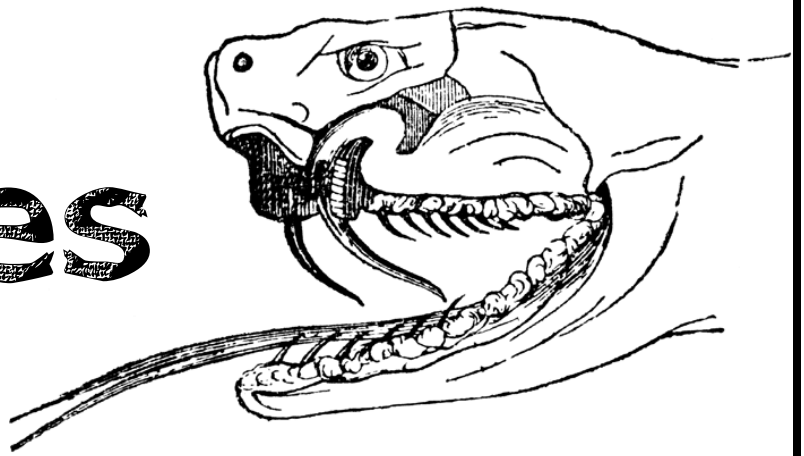
A large, empty rectangular box at the bottom left of the page, likely for a student's name or other information.



Snakes

Handwriting practice lines consisting of solid blue top and bottom lines and a dashed red middle line. There are ten such sets of lines arranged vertically down the page.

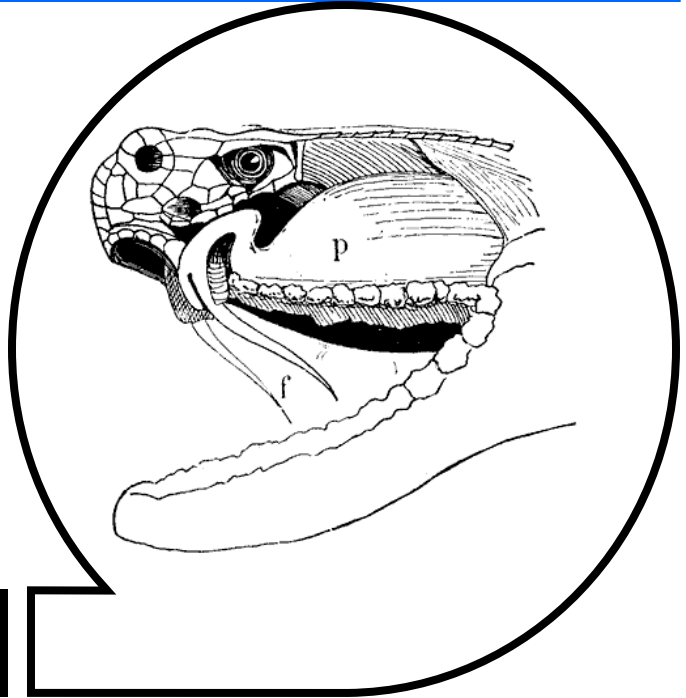
Snakes



Handwriting practice lines consisting of multiple sets of three horizontal lines: a solid blue top line, a dashed red middle line, and a solid blue bottom line.

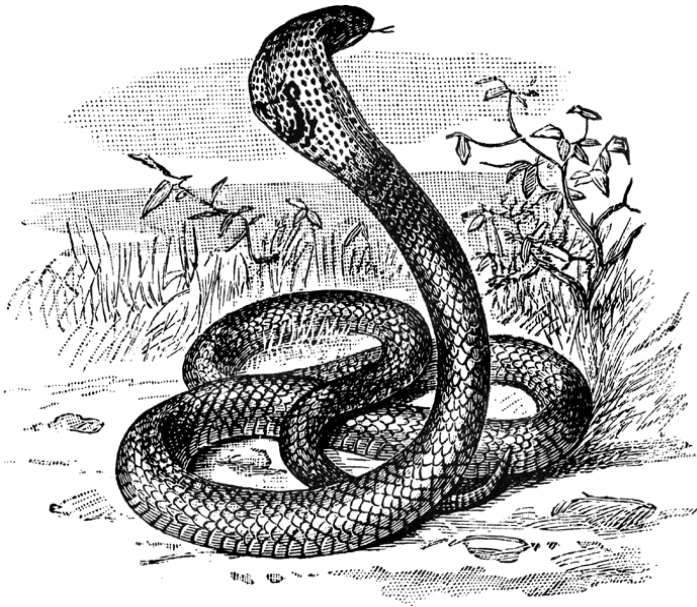
RATTLESNAKE

Handwriting practice lines consisting of multiple sets of blue solid top and bottom lines with a red dashed middle line.

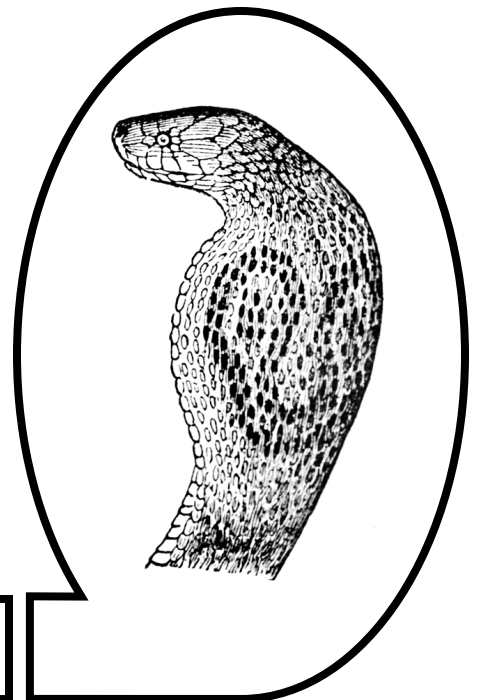


A rectangular box for writing or drawing, located at the bottom left of the page.

COBRA

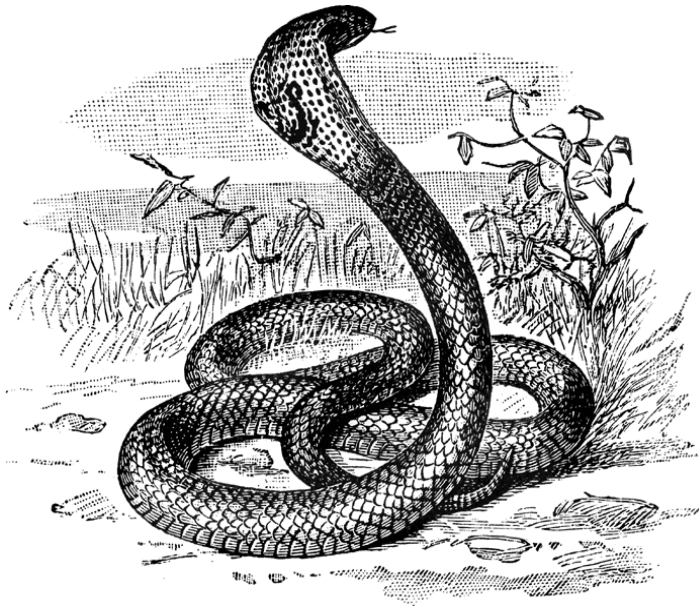


Handwriting practice lines consisting of multiple sets of blue top and bottom lines with a red dashed middle line.



A large, empty rectangular box for writing or drawing.

COBRIA



A series of horizontal lines for writing, followed by a large outline of the letter 'C' at the bottom right. The 'C' contains a detailed illustration of a cobra's head and neck, showing its scales and hood.